



WHATSAPP / WECHAT: +86-139-2333-6864

CONTACT US

佰蒂科技有限公司

ELIKE TECHNOLOGY CO., LIMITED

邮箱 / E-mail: elike@elikelighting.com

网址 / Website: www.elikelighting.com

地址 / Address: 广东省中山市古镇曹兴东路88号首层

#88 East Caoxing Road, Guzhen Town, Zhongshan City, Guangdong, China.

佰蒂科技
ELIKE LIGHTING

2023 SOLAR ENERGY
LED STREET LIGHT

Solar street lamp



Product details



Product advantages

- OSRAM or Philips high luminous led chip are used in the whole lamp , the light efficiency of whole lamp could reach 180-260LM/W
- Class A polysilicon solar panels is used in the whole lamp , conversion efficiency ≥18%, quickly converts light energy into electricity
- Power lithium iron phosphate battery is used in the whole lamp , new cell, more cycles, longer life
- The whole lamp adopts 24K gold-plated waterproof plug, gold-plated waterproof plug could pass 60A current, fast charging, improve charging efficiency
- The whole lamp housing is made of high-quality die-cast aluminum alloy, Akzo spraying, high strength, corrosion resistance, acid and alkali resistance
- PC optical integrated lens is used in the whole lamp , professional optical light distribution, more suitable for application scenarios, avoid light pollution
- New nano reflective materials are selected for the whole lamp , maximize the brightness of the led chip to reduce light waste
- The whole lamp can achieve uninterrupted lighting throughout the night in 365 days, intelligent AI control system, reasonable distribution of battery power
- The whole lamp can be continuously charged on rainy days, low light charging technology, normal charging on rainy days
- Streamlined design housing, in line with public aesthetics, has a certain self-cleaning ability, improve heat dissipation efficiency

Installation mode

Wall installation, pole installation, pole installation

Basic parameters

Model	Power	Size	LED	Solar panels	Batteries
SLSR301-50W	50W	510*215*80mm	46pcs/5054(240LM)	30W/6V	27.5AH/3.2V
SLSR301-80W	80W	510*215*80mm	69pcs/5054(240LM)	40W/6V	33AH/3.2V
SLSR301-200W	200W	590*220*90mm	60pcs/5054(240LM)	50W/6V	38.5AH/3.2V
SLSR301-300W	300W	590*220*90mm	81pcs/5054(240LM)	60W/6V	49.5AH/3.2V

Solar street lamp



Product details



Product advantages

- OSRAM or Philips high luminous led chip are used in the whole lamp , the light efficiency of whole lamp could reach 180-260LM/W
- Class A polysilicon solar panels is used in the whole lamp , conversion efficiency ≥18%, quickly converts light energy into electricity
- Power lithium iron phosphate battery is used in the whole lamp , new cell, more cycles, longer life
- The whole lamp adopts 24K gold-plated waterproof plug, gold-plated waterproof plug could pass 60A current, fast charging, improve charging efficiency
- The whole lamp housing is made of high-quality die-cast aluminum alloy, Akzo spraying, high strength, corrosion resistance, acid and alkali resistance
- PC optical integrated lens is used in the whole lamp , professional optical light distribution, more suitable for application scenarios, avoid light pollution
- The whole lamp can achieve uninterrupted lighting throughout the night in 365 days, intelligent AI control system, reasonable distribution of battery power
- The whole lamp can be continuously charged on rainy days, low light charging technology, normal charging on rainy days
- Streamlined design housing, in line with public aesthetics, has a certain self-cleaning ability, improve heat dissipation efficiency

Installation mode

Wall installation, pole installation, pole installation

Basic parameters

Model	Power	Size	LED	Solar panels	Batteries
SLSR302-200W	200W	510*215*80mm	69pcs/5054(240LM)	30W/6V	25.5AH/3.2V
	200W	510*215*80mm	69pcs/5054(240LM)	50W/6V	38.5AH/3.2V
SLSR302-300W	300W	510*215*80mm	144pcs/3030(180LM)	60W/6V	50AH/3.2V
	300W	510*215*80mm	144pcs/3030(180LM)	80W/6V	60AH/3.2V

Solar street lamp



Product details



Product advantages

- 1.OSRAM or Philips high luminous led chip are used in the whole lamp , the light efficiency of whole lamp could reach 180-260LM/W
- 2.Class A polysilicon solar panels is used in the whole lamp , conversion efficiency >18%, quickly converts light energy into electricity
- 3.Power lithium iron phosphate battery is used in the whole lamp , new cell , more cycles , longer life
- 4.The whole lamp adopts 24K gold-plated waterproof plug , gold-plated waterproof plug could pass 60A current , fast charging , improve charging efficiency
- 5.The whole lamp housing is made of high-quality die-cast aluminum alloy , Akzo spraying , high strength , corrosion resistance , acid and alkali resistance
- 6.PC optical integrated lens is used in the whole lamp , professional optical light distribution , more suitable for application scenarios , avoid light pollution
- 7.The whole lamp can achieve uninterrupted lighting throughout the night in 365 days , intelligent AI control system , reasonable distribution of battery power
- 8.The whole lamp can be continuously charged on rainy days , low light charging technology , normal charging on rainy days
- 9.Streamlined design housing , in line with public aesthetics , has a certain self-cleaning ability , improve heat dissipation efficiency

Installation mode

Wall installation, pole installation, pole installation

Basic parameters

Model	Power	Size	LED	Solar panels	Batteries
SLSR305-200W	50W	500*205*80mm	60pcs/5054(210LM)	50W/6V	38.5AH/3.2V
SLSR305-300W	80W	550*260*90mm	100pcs/5054(210LM)	60W/6V	49.5AH/3.2V

Solar street lamp



Product details



Product advantages

- 1.OSRAM or Philips high luminous led chip are used in the whole lamp , the light efficiency of whole lamp could reach 180-260LM/W
- 2.Class A polysilicon solar panels is used in the whole lamp , conversion efficiency >18%, quickly converts light energy into electricity
- 3.Power lithium iron phosphate battery is used in the whole lamp , new cell , more cycles , longer life
- 4.The whole lamp adopts 24K gold-plated waterproof plug , gold-plated waterproof plug could pass 60A current , fast charging , improve charging efficiency
- 5.The whole lamp housing is made of high-quality die-cast aluminum alloy , Akzo spraying , high strength , corrosion resistance , acid and alkali resistance
- 6.PC optical integrated lens is used in the whole lamp , professional optical light distribution , more suitable for application scenarios , avoid light pollution
- 7.The whole lamp can achieve uninterrupted lighting throughout the night in 365 days , intelligent AI control system , reasonable distribution of battery power
- 8.The whole lamp can be continuously charged on rainy days , low light charging technology , normal charging on rainy days
- 9.Streamlined design housing , in line with public aesthetics , has a certain self-cleaning ability , improve heat dissipation efficiency

Installation mode

Wall installation, pole installation, pole installation

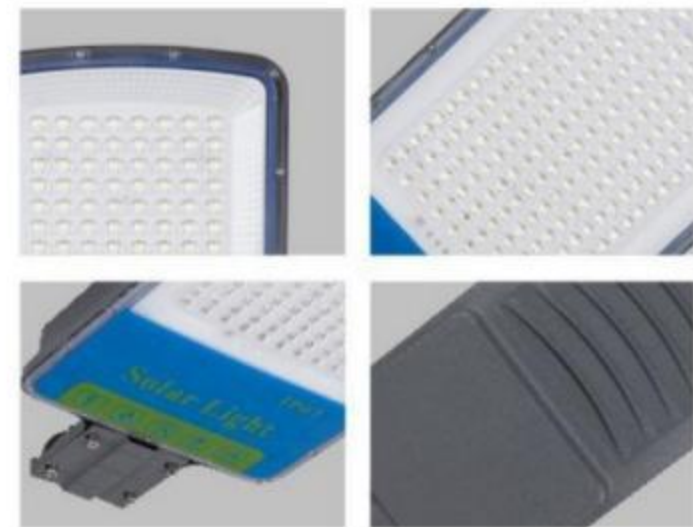
Basic parameters

Model	Power	Size	LED	Solar panels	Batteries
SLSR306-200W	50W	500*200*75mm	60pcs/5054(210LM)	50W/6V	38.5AH/3.2V
SLSR306-300W	80W	550*260*90mm	100pcs/5054(210LM)	60W/6V	49.5AH/3.2V

Solar street lamp



Product details



Product advantages

1. OSRAM or Philips high luminous led chip are used in the whole lamp , the light efficiency of whole lamp could reach 180-260LM/W
2. Class A polysilicon solar panels is used in the whole lamp , conversion efficiency ≥18%, quickly converts light energy into electricity
3. Power lithium iron phosphate battery is used in the whole lamp , new cell , more cycles , longer life
4. The whole lamp adopts 24K gold-plated waterproof plug , gold-plated waterproof plug could pass 60A current , fast charging , improve charging efficiency
5. The whole lamp housing is made of high-quality die-cast aluminum alloy , Akzo spraying , high strength , corrosion resistance , acid and alkali resistance
6. PC optical integrated lens is used in the whole lamp , professional optical light distribution , more suitable for application scenarios , avoid light pollution
7. The whole lamp can achieve uninterrupted lighting throughout the night in 365 days , intelligent AI control system , reasonable distribution of battery power
8. The whole lamp can be continuously charged on rainy days , low light charging technology , normal charging on rainy days
9. Streamlined design housing , in line with public aesthetics , has a certain self-cleaning ability , improve heat dissipation efficiency

Installation mode

Wall installation, pole installation, pole installation

Basic parameters

Model	Power	Size	LED	Solar panels	Batteries
SLSR307-30W	30W	440*180*60mm	30pcs/3030(180LM)	6V/15W	11AH/3.2V
SLSR307-50W	50W	490*200*60mm	50pcs/3030(180LM)	6V/20W	16.5AH/3.2V
SLSR307-100W	100W	540*220*60mm	104pcs/3030(180LM)	6V/25W	22AH/3.2V
SLSR307-150W	150W	590*240*60mm	150pcs/3030(180LM)	6V/20W	27.5AH/3.2V

Solar street lamp



Product details



Product advantages

1. OSRAM or Philips high luminous led chip are used in the whole lamp , the light efficiency of whole lamp could reach 180-260LM/W
2. Class A polysilicon solar panels is used in the whole lamp , conversion efficiency ≥18%, quickly converts light energy into electricity
3. Power lithium iron phosphate battery is used in the whole lamp , new cell , more cycles , longer life
4. The whole lamp adopts 24K gold-plated waterproof plug , gold-plated waterproof plug could pass 60A current , fast charging , improve charging efficiency
5. The whole lamp housing is made of high-quality die-cast aluminum alloy , Akzo spraying , high strength , corrosion resistance , acid and alkali resistance
6. Selection of high strength tempered glass , high strength , good light transmission
7. The whole lamp can achieve uninterrupted lighting throughout the night in 365 days , intelligent AI control system , reasonable distribution of battery power
8. The whole lamp can be continuously charged on rainy days , low light charging technology , normal charging on rainy days
9. Streamlined design housing , in line with public aesthetics , has a certain self-cleaning ability , improve heat dissipation efficiency

Installation mode

Wall installation, pole installation, pole installation

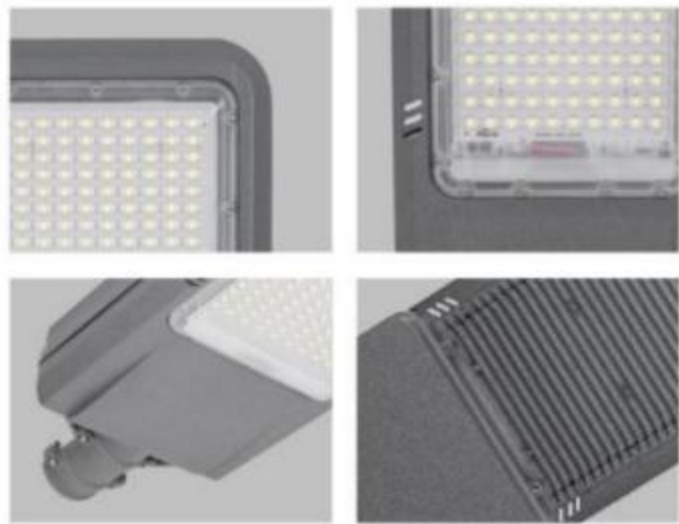
Basic parameters

Model	Power	Size	LED	Solar panels	Batteries
SLSR308-50W	50W	440*180*60mm	206pcs/2835(160LM)	6V/20W	16.5AH/3.2V
SLSR308-100W	100W	490*200*60mm	314pcs/2835(160LM)	6V/25W	22AH/3.2V
SLSR308-150W	150W	540*220*60mm	419pcs/2835(160LM)	6V/30W	27.5AH/3.2V
SLSR308-200W	200W	590*240*60mm	572pcs/2835(160LM)	6V/35W	33AH/3.2V

Solar street lamp



Product details



Product advantages

- OSRAM or Philips high luminous led chip are used in the whole lamp , the light efficiency of whole lamp could reach 180-260LM/W
- Class A polysilicon solar panels is used in the whole lamp , conversion efficiency $\geq 18\%$, quickly converts light energy into electricity
- Power lithium iron phosphate battery is used in the whole lamp , new cell, more cycles, longer life
- The whole lamp adopts 24K gold-plated waterproof plug, gold-plated waterproof plug could pass 60A current, fast charging, improve charging efficiency
- The whole lamp housing is made of high-quality die-cast aluminum alloy, Akzo spraying, high strength, corrosion resistance, acid and alkali resistance
- PC optical integrated lens is used in the whole lamp , professional optical light distribution, more suitable for application scenarios, avoid light pollution
- The whole lamp can achieve uninterrupted lighting throughout the night in 365 days, intelligent AI control system, reasonable distribution of battery power
- The whole lamp can be continuously charged on rainy days, low light charging technology, normal charging on rainy days
- Streamlined design housing, in line with public aesthetics, has a certain self-cleaning ability, improve heat dissipation efficiency

Installation mode

Wall installation, pole installation, pole installation

Basic parameters

Model	Power	Size	LED	Solar panels	Batteries
SLSR309-50W	50W	500*215*85mm	50pcs/5050(210LM)	60W/18V	30AH/11.1V
SLSR309-100W	100W	550*225*90mm	100pcs/5050(210LM)	80W/18V	40AH/11.1V
SLSR309-150W	150W	600*245*90mm	150pcs/5050(210LM)	100W/18V	50AH/11.1V
SLSR309-200W	200W	660*267*95mm	200pcs/5050(210LM)	120W/18V	60AH/11.1V
SLSR309-300W	300W	790*264*84mm	300pcs/5050(210LM)	150W/18V	80AH/11.1V

Solar street lamp



Product details



Product advantages

- OSRAM or Philips high luminous led chip are used in the whole lamp , the light efficiency of whole lamp could reach 180-260LM/W
- Class A polysilicon solar panels is used in the whole lamp , conversion efficiency $\geq 18\%$, quickly converts light energy into electricity
- Power lithium iron phosphate battery is used in the whole lamp , new cell, more cycles, longer life
- The whole lamp adopts 24K gold-plated waterproof plug, gold-plated waterproof plug could pass 60A current, fast charging, improve charging efficiency
- The whole lamp housing is made of high-quality die-cast aluminum alloy, Akzo spraying, high strength, corrosion resistance, acid and alkali resistance
- PC optical integrated lens is used in the whole lamp , professional optical light distribution, more suitable for application scenarios, avoid light pollution
- The whole lamp can achieve uninterrupted lighting throughout the night in 365 days, intelligent AI control system, reasonable distribution of battery power
- The whole lamp can be continuously charged on rainy days, low light charging technology, normal charging on rainy days
- Streamlined design housing, in line with public aesthetics, has a certain self-cleaning ability, improve heat dissipation efficiency

Installation mode

Wall installation, pole installation, pole installation

Basic parameters

Model	Power	Size	LED	Solar panels	Batteries
SLSR310-100W	100W	500*205*80mm	100pcs/3030(180LM)	80W/18V	40AH/11.1V
SLSR310-150W	150W	700*265*100mm	150pcs/3030(180LM)	100W/18V	50AH/11.1V
SLSR310-200W	200W	710*265*100mm	200pcs/3030(180LM)	120W/18V	60AH/11.1V

Solar street lamp



Product details



Product advantages

1. OSRAM or Philips high luminous led chip are used in the whole lamp , the light efficiency of whole lamp could reach 180-260LM/W
2. Class A polysilicon solar panels is used in the whole lamp , conversion efficiency $\geq 18\%$, quickly converts light energy into electricity
3. Power lithium iron phosphate battery is used in the whole lamp , new cell, more cycles, longer life
4. The whole lamp adopts 24K gold-plated waterproof plug, gold-plated waterproof plug could pass 60A current, fast charging, improve charging efficiency
5. The whole lamp housing is made of high-quality die-cast aluminum alloy, Akzo spraying, high strength, corrosion resistance, acid and alkali resistance
6. PC optical integrated lens is used in the whole lamp , professional optical light distribution, more suitable for application scenarios, avoid light pollution
7. The whole lamp can achieve uninterrupted lighting throughout the night in 365 days, intelligent AI control system, reasonable distribution of battery power
8. The whole lamp can be continuously charged on rainy days, low light charging technology, normal charging on rainy days
9. Streamlined design housing, in line with public aesthetics, has a certain self-cleaning ability, improve heat dissipation efficiency

Installation mode

Wall installation, pole installation, pole installation

Basic parameters

Model	Power	Size	Solar Size	Solar panels	Batteries
SLSR313-100W	100W	490*215*90mm	350*530*17mm	6V/25W	3.2V 22AH
SLSR313-200W	200W	490*215*90mm	350*670*17mm	6V/30W	3.2V 33AH

Solar street lamp



Product details



Product advantages

1. OSRAM or Philips high luminous led chip are used in the whole lamp , the light efficiency of whole lamp could reach 180-260LM/W
2. Class A polysilicon solar panels is used in the whole lamp , conversion efficiency $\geq 18\%$, quickly converts light energy into electricity
3. Power lithium iron phosphate battery is used in the whole lamp , new cell, more cycles, longer life
4. The whole lamp adopts 24K gold-plated waterproof plug, gold-plated waterproof plug could pass 60A current, fast charging, improve charging efficiency
5. The whole lamp housing is made of high-quality die-cast aluminum alloy, Akzo spraying, high strength, corrosion resistance, acid and alkali resistance
6. Selection of high strength tempered glass, high strength, good light transmission
7. The whole lamp can achieve uninterrupted lighting throughout the night in 365 days, intelligent AI control system, reasonable distribution of battery power
8. The whole lamp can be continuously charged on rainy days, low light charging technology, normal charging on rainy days
9. Streamlined design housing, in line with public aesthetics, has a certain self-cleaning ability, improve heat dissipation efficiency

Installation mode

Wall installation, pole installation, pole installation

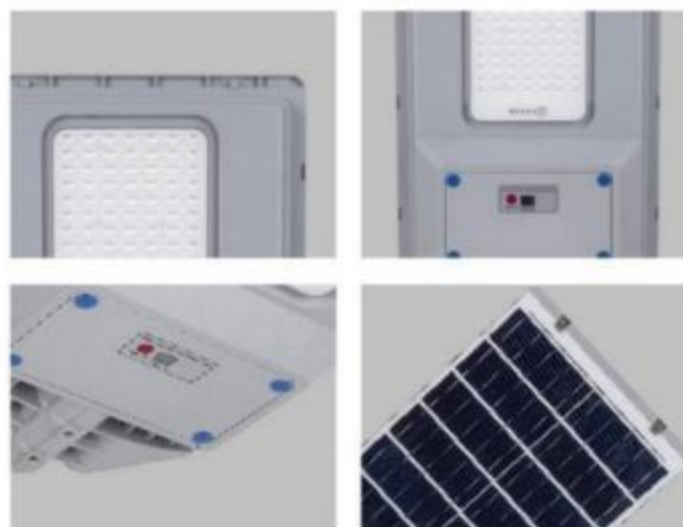
Basic parameters

Model	Power	Size	Solar Size	Solar panels	Batteries
SLSR314-300W	300W	495*210*66mm	530*350mm	6V/25W	3.2V 20AH
SLSR314-80W	80W	520*190*90mm	445*670mm	6V/40W	3.2V 40AH
SLSR314-350W	350W	570*235*70mm	630*350mm	6V/35W	3.2V 30AH
SLSR314-120W	120W	600*265*100mm	680*670mm	6V/70W	3.2V 60AH

Integrated solar street lamp



Product details



Product advantages

1. OSRAM or Philips high luminous led chip are used in the whole lamp , the light efficiency of whole lamp could reach 180-260LM/W
2. Class A polysilicon solar panels is used in the whole lamp , conversion efficiency >18%, quickly converts light energy into electricity
3. Power lithium iron phosphate battery is used in the whole lamp , new cell , more cycles , longer life
4. The whole lamp adopts environmentally friendly ABS engineering plastic , flame retardant , oxidation resistance , corrosion resistance
5. PC optical integrated lens is used in the whole lamp , professional optical light distribution , more suitable for application scenarios , avoid light pollution
6. The whole lamp can achieve uninterrupted lighting throughout the night in 365 days , intelligent AI control system , reasonable distribution of battery power
7. The whole lamp can be continuously charged on rainy days , low light charging technology , normal charging on rainy days
8. Streamlined design housing , in line with public aesthetics , has a certain self-cleaning ability , improve heat dissipation efficiency

Installation mode

Wall installation, pole installation, pole installation

Basic parameters

Model	Power	Size	LED	Solar panels	Batteries
SLSR401-50W	50W	560*345*65mm	84pcs/3030(180LM)	20W/6V	16.5AH/3.2V
SLSR401-80W	80W	720*355*70mm	144pcs/3030(180LM)	30W/6V	27.5AH/3.2V

Integrated solar street lamp



Product details



Product advantages

1. OSRAM or Philips high luminous led chip are used in the whole lamp , the light efficiency of whole lamp could reach 180-260LM/W
2. Class A polysilicon solar panels is used in the whole lamp , conversion efficiency >18%, quickly converts light energy into electricity
3. Power lithium iron phosphate battery is used in the whole lamp , new cell , more cycles , longer life
4. The whole lamp adopts environmentally friendly ABS engineering plastic , flame retardant , oxidation resistance , corrosion resistance
5. PC optical integrated lens is used in the whole lamp , professional optical light distribution , more suitable for application scenarios , avoid light pollution
6. The whole lamp can achieve uninterrupted lighting throughout the night in 365 days , intelligent AI control system , reasonable distribution of battery power
7. The whole lamp can be continuously charged on rainy days , low light charging technology , normal charging on rainy days
8. Streamlined design housing , in line with public aesthetics , has a certain self-cleaning ability , improve heat dissipation efficiency
9. Radar microwave intelligent control module is used in the whole lamp , manned highlight , unmanned micro-bright , saving electric energy

Installation mode

Wall installation, pole installation, pole installation



Basic parameters

Model	Power	Size	Solar Size	Batteries	Shell material
SLSR402-100W	100W	343*443*67mm	330*398mm	10AH	ABS
SLSR402-200W	200W	343*443*67mm	330*398mm	15AH	ABS
SLSR402-300W	300W	347*630*77mm	585*330mm	25AH	ABS
SLSR402-400W	400W	347*630*77mm	585*330mm	30AH	ABS

Integrated solar street lamp



Product details



Product advantages

- OSRAM or Philips high luminous led chip are used in the whole lamp, the light efficiency of whole lamp could reach 180-260LM/W
- Class A polysilicon solar panels is used in the whole lamp, conversion efficiency ≥18%, quickly converts light energy into electricity
- The whole lamp can achieve uninterrupted lighting throughout the night in 365 days, intelligent AI control system, reasonable distribution of battery power
- The whole lamp can be continuously charged on rainy days, low light charging technology, normal charging on rainy days
- Streamlined design housing, in line with public aesthetics, has a certain self-cleaning ability, improve heat dissipation efficiency
- Radar microwave intelligent control module is used in the whole lamp, manned highlight, unmanned micro-bright, saving electric energy

Installation mode

Pole-mounted, wall-mounted

Basic parameters

Model	Power	Size	Solar Size	Batteries	Shell material
SLSR403-20W	20W	318*194*51mm	265*175mm	10AH	ABS
SLSR403-40W	40W	380*210*51mm	315*190mm	15AH	ABS
SLSR403-60W	60W	513*217*53mm	429*190mm	25AH	ABS
SLSR403-80W	80W	656*223*53mm	554*190mm	30AH	ABS

Integrated solar street lamp



Product details



Product advantages

- OSRAM or Philips high luminous led chip are used in the whole lamp, the light efficiency of whole lamp could reach 180-260LM/W
- Class A polysilicon solar panels is used in the whole lamp, conversion efficiency ≥18%, quickly converts light energy into electricity
- Power lithium iron phosphate battery is used in the whole lamp, new cell, more cycles, longer life
- The whole lamp is made of high-quality profile structural components, which are integrated oxidation molding, UV resistant, corrosion resistant, acid and alkali resistant
- PC optical integrated lens is used in the whole lamp, professional optical light distribution, more suitable for application scenarios, avoid light pollution
- The whole lamp can achieve uninterrupted lighting throughout the night in 365 days, intelligent AI control system, reasonable distribution of battery power
- The whole lamp can be continuously charged on rainy days, low light charging technology, normal charging on rainy days
- Streamlined design housing, in line with public aesthetics, has a certain self-cleaning ability, improve heat dissipation efficiency
- Radar microwave intelligent control module is used in the whole lamp, manned highlight, unmanned micro-bright, saving electric energy

Installation mode

Rod Mounting

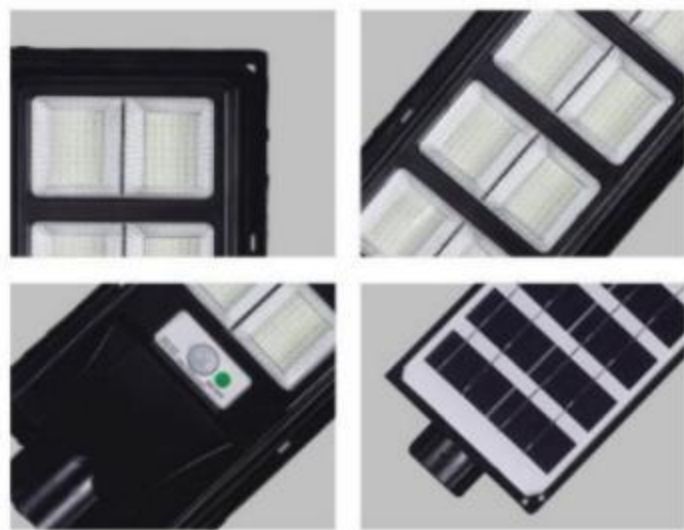
Basic parameters

Model	Power	Size	Solar Size	Solar panels	Batteries
SLSR405-300W	300W	887*400*280mm	822*380mm	60W/6V	45AH/3.2V
SLSR405-400W	400W	1160*400*280mm	1095*380mm	80W/6V	60AH/3.2V
SLSR405-500W	500W	1435*400*280mm	1370*380mm	100W/6V	75AH/3.2V

Integrated solar street lamp



Product details



Product advantages

1. OSRAM or Philips high luminous led chip are used in the whole lamp , the light efficiency of whole lamp could reach 180-260LM/W
2. Class A polysilicon solar panels is used in the whole lamp , conversion efficiency >18%, quickly converts light energy into electricity
3. Power lithium iron phosphate battery is used in the whole lamp , new cell , more cycles , longer life
4. The whole lamp adopts environmentally friendly ABS engineering plastic , flame retardant , oxidation resistance , corrosion resistance
5. PC optical integrated lens is used in the whole lamp , professional optical light distribution , more suitable for application scenarios , avoid light pollution
6. The whole lamp can achieve uninterrupted lighting throughout the night in 365 days , intelligent AI control system , reasonable distribution of battery power
7. The whole lamp can be continuously charged on rainy days , low light charging technology , normal charging on rainy days
8. Streamlined design housing , in line with public aesthetics , has a certain self-cleaning ability , improve heat dissipation efficiency
9. Radar microwave intelligent control module is used in the whole lamp , manned highlight , unmanned micro-bright , saving electric energy

Installation mode

Pole-mounted, wall-mounted

Basic parameters

Model	Power	Size	Solar Size	Batteries	Shell material
SLSR408-100W	100W	285*188*58mm	171*246mm	10AH	ABS
SLSR408-200W	200W	378*188*58mm	171*336mm	15AH	ABS
SLSR408-300W	300W	495*188*58mm	171*456mm	25AH	ABS
SLSR408-400W	400W	586*188*58mm	171*547mm	30AH	ABS
SLSR408-500W	500W	700*188*58mm	171*638mm	35AH	ABS
SLSR408-600W	600W	790*188*58mm	171*729mm	45AH	ABS

Integrated solar street lamp



Product details



Product advantages

1. OSRAM or Philips high luminous led chip are used in the whole lamp , the light efficiency of whole lamp could reach 180-260LM/W
2. Class A polysilicon solar panels is used in the whole lamp , conversion efficiency >18%, quickly converts light energy into electricity
3. Power lithium iron phosphate battery is used in the whole lamp , new cell , more cycles , longer life
4. The whole lamp adopts environmentally friendly ABS engineering plastic , flame retardant , oxidation resistance , corrosion resistance
5. PC optical integrated lens is used in the whole lamp , professional optical light distribution , more suitable for application scenarios , avoid light pollution
6. The whole lamp can achieve uninterrupted lighting throughout the night in 365 days , intelligent AI control system , reasonable distribution of battery power
7. The whole lamp can be continuously charged on rainy days , low light charging technology , normal charging on rainy days
8. Streamlined design housing , in line with public aesthetics , has a certain self-cleaning ability , improve heat dissipation efficiency
9. Radar microwave intelligent control module is used in the whole lamp , manned highlight , unmanned micro-bright , saving electric energy

Installation mode

Pole-mounted, wall-mounted

Basic parameters

Model	Power	Size	Solar Size	Batteries	Shell material
SLSR409-30W	30W	390*190*55mm	6V/6W	3.2V/4.5AH	Plastic+PC+ABS
SLSR409-60W	60W	480*220*55mm	6V/8W	3.2V/5.5AH	Plastic+PC+ABS
SLSR409-90W	90W	620*240*55mm	6V/12W	3.2V/9AH	Plastic+PC+ABS
SLSR409-120W	120W	720*240*55mm	6V/16W	3.2V/12AH	Plastic+PC+ABS
SLSR409-150W	150W	820*240*55mm	6V/18W	3.2V/15AH	Plastic+PC+ABS

Integrated solar street lamp



Product details



Product advantages

- OSRAM or Philips high luminous led chip are used in the whole lamp , the light efficiency of whole lamp could reach 180-260LM/W
- Class A polysilicon solar panels is used in the whole lamp , conversion efficiency ≥18%, quickly converts light energy into electricity
- Power lithium iron phosphate battery is used in the whole lamp , new cell , more cycles , longer life
- The whole lamp is made of high-quality profile structural components , which are integrated oxidation molding , UV resistant , corrosion resistant , acid and alkali resistant
- PC optical integrated lens is used in the whole lamp , professional optical light distribution , more suitable for application scenarios , avoid light pollution
- The whole lamp can achieve uninterrupted lighting throughout the night in 365 days , intelligent AI control system , reasonable distribution of battery power
- The whole lamp can be continuously charged on rainy days , low light charging technology , normal charging on rainy days
- Streamlined design housing , in line with public aesthetics , has a certain self-cleaning ability , improve heat dissipation efficiency

Installation mode

Pole-mounted, wall-mounted

Basic parameters

Model	Power	Size	Solar Size	Solar panels	Batteries
SLSR410 Complementary Electricity	240W	1360*368*50mm	1350*340mm	6V/80W	3.2V 72AH
SLSR410 Internet of things	96W	1070*368*50mm	1060*340mm	6V/55W	12.8V 24AH

Integrated solar street lamp



Product details



Product advantages

- OSRAM or Philips high luminous led chip are used in the whole lamp , the light efficiency of whole lamp could reach 180-260LM/W
- Class A polysilicon solar panels is used in the whole lamp , conversion efficiency ≥18%, quickly converts light energy into electricity
- Power lithium iron phosphate battery is used in the whole lamp , new cell , more cycles , longer life
- The whole lamp is made of high-quality profile structural components , which are integrated oxidation molding , UV resistant , corrosion resistant , acid and alkali resistant
- PC optical integrated lens is used in the whole lamp , professional optical light distribution , more suitable for application scenarios , avoid light pollution
- The whole lamp can achieve uninterrupted lighting throughout the night in 365 days , intelligent AI control system , reasonable distribution of battery power
- The whole lamp can be continuously charged on rainy days , low light charging technology , normal charging on rainy days
- Streamlined design housing , in line with public aesthetics , has a certain self-cleaning ability , improve heat dissipation efficiency
- Radar microwave intelligent control module is used in the whole lamp , manned highlight , unmanned micro-bright , saving electric energy

Installation mode

Pole-mounted, wall-mounted

Basic parameters

Model	Power	Size	Solar Size	Solar panels	Batteries
SLSR411-100W	100W	700*200*45mm	696*210mm	6V/25W	3.2V 18AH
SLSR411-150W	150W	900*220*45mm	896*210mm	6V/35W	3.2V24AH
SLSR411-200W	200W	1000*220*45mm	996*210mm	6V/40W	3.2V 30AH

Integrated solar street lamp



Product details



Product advantages

1. OSRAM or Philips high luminous led chip are used in the whole lamp , the light efficiency of whole lamp could reach 180-260LM/W
2. Class A polysilicon solar panels is used in the whole lamp, conversion efficiency ≥18%, quickly converts light energy into electricity
3. Power lithium iron phosphate battery is used in the whole lamp , new cell, more cycles, longer life
4. The whole lamp is made of high-quality profile structural components, which are integrated oxidation molding, UV resistant, corrosion resistant, acid and alkali resistant
5. PC optical integrated lens is used in the whole lamp , professional optical light distribution, more suitable for application scenarios, avoid light pollution
6. The whole lamp can achieve uninterrupted lighting throughout the night in 365 days, intelligent AI control system, reasonable distribution of battery power
7. The whole lamp can be continuously charged on rainy days, low light charging technology, normal charging on rainy days
8. Streamlined design housing, in line with public aesthetics, has a certain self-cleaning ability, improve heat dissipation efficiency

Installation mode

Pole-mounted, wall-mounted

Basic parameters

Model	Power	Size	Solar Size	Solar panels	Batteries
SLSR412-36W	36W	1060*385*43mm	1025*345mm	6V/55W	3.2V 54AH
SLSR412-60W	60W	1370*385*43mm	1335*345mm	6V/75W	3.2V 72AH
SLSR412-96W	96W	1805*385*43mm	1770*345mm	6V/100W	3.2V 108AH

solar cast light



Product details



Product advantages

1. OSRAM or Philips high luminous led chip are used in the whole lamp , the light efficiency of whole lamp could reach 180-260LM/W
2. Class A polysilicon solar panels is used in the whole lamp, conversion efficiency ≥18%, quickly converts light energy into electricity
3. Power lithium iron phosphate battery is used in the whole lamp , new cell, more cycles, longer life
4. The whole lamp adopts 24K gold-plated waterproof plug, gold-plated waterproof plug could pass 60A current, fast charging, improve charging efficiency
5. The whole lamp adopts environmentally friendly ABS engineering plastic, flame retardant, oxidation resistance, corrosion resistance
6. PC optical integrated lens is used in the whole lamp , professional optical light distribution, more suitable for application scenarios, avoid light pollution
7. The whole lamp can achieve uninterrupted lighting throughout the night in 365 days, intelligent AI control system, reasonable distribution of battery power
8. The whole lamp can be continuously charged on rainy days, low light charging technology, normal charging on rainy days
9. Streamlined design housing, in line with public aesthetics, has a certain self-cleaning ability, improve heat dissipation efficiency

Installation mode

Pole-mounted, wall-mounted

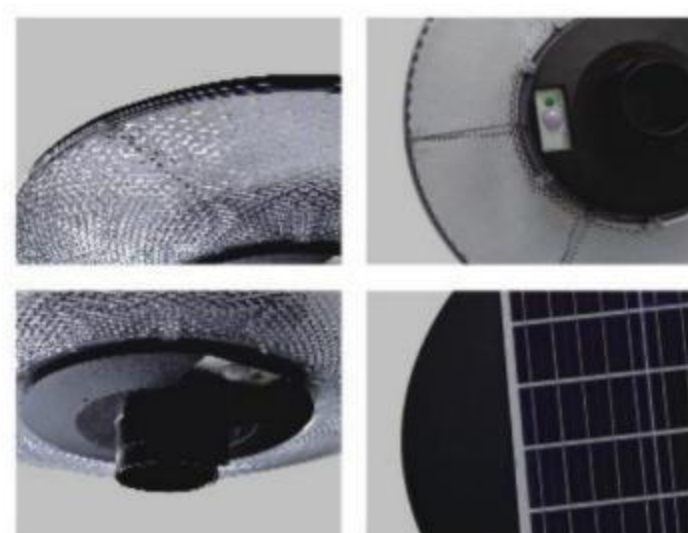
Basic parameters

Model	Power	LED	Solar panels	Batteries
SLSF501-100W	100W	114pcs/3030(180LM)	15W/6V	11AH/3.2V
SLSF501-200W	200W	182pcs/3030(180LM)	20W/6V	16.5AH/3.2V
SLSF501-300W	300W	232pcs/3030(180LM)	25W/6V	22AH/3.2V

Integrated Solar Yard Light



Product details



Product advantages

- OSRAM or Philips high luminous led chip are used in the whole lamp , the light efficiency of whole lamp could reach 180-260LM/W
- Class A polysilicon solar panels is used in the whole lamp , conversion efficiency >18%, quickly converts light energy into electricity
- Power lithium iron phosphate battery is used in the whole lamp , new cell, more cycles, longer life
- The whole lamp adopts environmentally friendly ABS engineering plastic, flame retardant, oxidation resistance, corrosion resistance
- The whole lamp can achieve uninterrupted lighting throughout the night in 365 days, intelligent AI control system, reasonable distribution of battery power
- The whole lamp can be continuously charged on rainy days, low light charging technology, normal charging on rainy days
- Streamlined design housing, in line with public aesthetics, has a certain self-cleaning ability, improve heat dissipation efficiency
- Radar microwave intelligent control module is used in the whole lamp, manned highlight, unmanned micro-bright, saving electric energy

Installation mode

Wall installation, pole installation, pole installation

Basic parameters

Model	Power	Size	Solar Size	Batteries	Shell material
SLST901 360°A	15W	550*60mm	345*345mm	10AH	ABS
SLST901 360°A	25W	610*95mm	337*495mm	20AH	ABS

Integrated clairvoyant solar yard light



Product details



Product advantages

- OSRAM or Philips high luminous led chip are used in the whole lamp , the light efficiency of whole lamp could reach 180-260LM/W
- Class A polysilicon solar panels is used in the whole lamp , conversion efficiency >18%, quickly converts light energy into electricity
- Power lithium iron phosphate battery is used in the whole lamp , new cell, more cycles, longer life
- The whole lamp adopts environmentally friendly ABS engineering plastic, flame retardant, oxidation resistance, corrosion resistance
- The whole lamp can achieve uninterrupted lighting throughout the night in 365 days, intelligent AI control system, reasonable distribution of battery power
- The whole lamp can be continuously charged on rainy days, low light charging technology, normal charging on rainy days
- Streamlined design housing, in line with public aesthetics, has a certain self-cleaning ability, improve heat dissipation efficiency
- Radar microwave intelligent control module is used in the whole lamp, manned highlight, unmanned micro-bright, saving electric energy

Installation mode

Wall installation, pole installation, pole installation

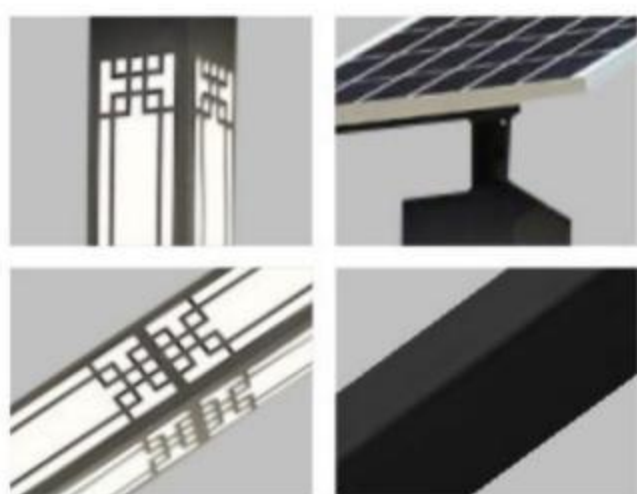
Basic parameters

Model	Power	Size	Solar Size	Batteries	Shell material
SLST902 C/D	15W	610*180mm	604*604mm	10AH	ABS
SLST902 C/D	25W	610*180mm	604*604mm	20AH	ABS

Landscape light solar series



Product details



Product advantages

1. OSRAM or Philips high luminous led chip are used in the whole lamp , the light efficiency of whole lamp could reach 180-260LM/W
2. Class A polysilicon solar panels is used in the whole lamp, conversion efficiency ≥18%, quickly converts light energy into electricity
3. Power lithium iron phosphate battery is used in the whole lamp , new cell, more cycles, longer life
4. The whole lamp is made of high-quality profile structural components, which are integrated oxidation molding, UV resistant, corrosion resistant, acid and alkali resistant
5. The whole lamp can achieve uninterrupted lighting throughout the night in 365 days, intelligent AI control system, reasonable distribution of battery power
6. The whole lamp can be continuously charged on rainy days, low light charging technology, normal charging on rainy days
7. Streamlined design housing, in line with public aesthetics, has a certain self-cleaning ability, improve heat dissipation efficiency

Applicable

Villas, communities, parks, plazas, roads

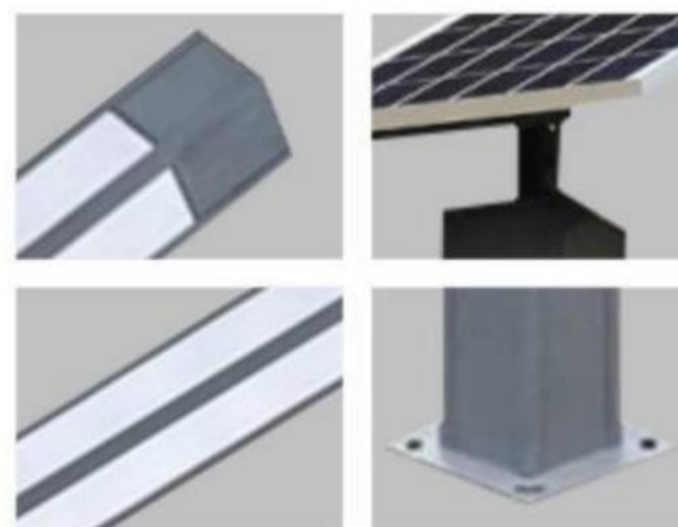
Basic parameters

Model	Height	Size	LED	Material
SLSG1001	3m	200*200mm	2*20W	Aluminium
SLSG1001	3.5m	250*250mm	2*20W	Aluminium

Landscape light solar series



Product details



Product advantages

1. OSRAM or Philips high luminous led chip are used in the whole lamp , the light efficiency of whole lamp could reach 180-260LM/W
2. Class A polysilicon solar panels is used in the whole lamp, conversion efficiency ≥18%, quickly converts light energy into electricity
3. Power lithium iron phosphate battery is used in the whole lamp , new cell, more cycles, longer life
4. The whole lamp is made of high-quality profile structural components, which are integrated oxidation molding, UV resistant, corrosion resistant, acid and alkali resistant
5. The whole lamp can achieve uninterrupted lighting throughout the night in 365 days, intelligent AI control system, reasonable distribution of battery power
6. The whole lamp can be continuously charged on rainy days, low light charging technology, normal charging on rainy days
7. Streamlined design housing, in line with public aesthetics, has a certain self-cleaning ability, improve heat dissipation efficiency

Applicable

Villas, communities, parks, plazas, roads

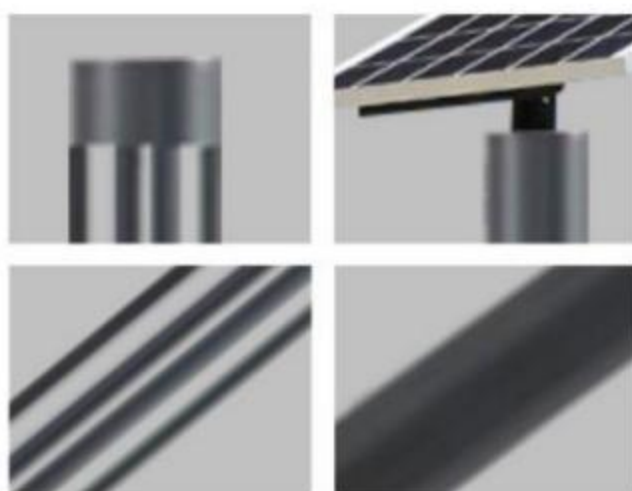
Basic parameters

Model	Height	Size	LED	Material
SLSG1002	3m	200*200mm	2*20W	Aluminium
SLSG1002	3.5m	200*200mm	2*20W	Aluminium

Landscape light solar series



Product details



Product advantages

- 1.OSRAM or Philips high luminous led chip are used in the whole lamp , the light efficiency of whole lamp could reach 180-260LM/W
- 2.Class A polysilicon solar panels is used in the whole lamp, conversion efficiency ≥18%, quickly converts light energy into electricity
- 3.Power lithium iron phosphate battery is used in the whole lamp , new cell, more cycles, longer life
- 4.The whole lamp is made of high-quality profile structural components, which are integrated oxidation molding, UV resistant, corrosion resistant, acid and alkali resistant
- 5.The whole lamp can achieve uninterrupted lighting throughout the night in 365 days, intelligent AI control system, reasonable distribution of battery power
- 6.The whole lamp can be continuously charged on rainy days, low light charging technology, normal charging on rainy days
- 7.Streamlined design housing, in line with public aesthetics, has a certain self-cleaning ability, improve heat dissipation efficiency

Applicable

Villas, communities, parks, plazas, roads

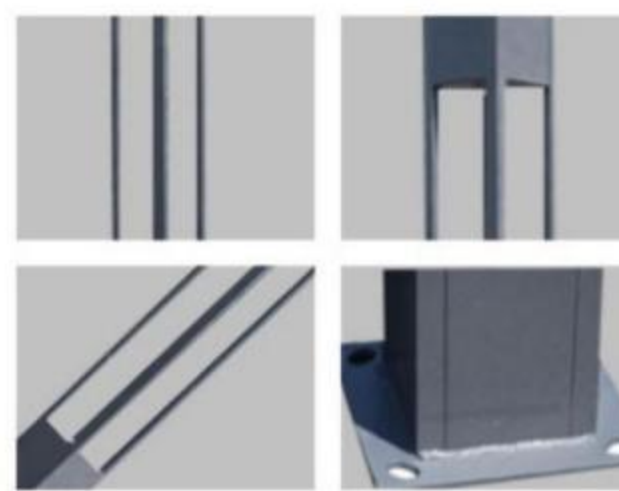
Basic parameters

Model	Height	Size	LED	Material
SLSG1003	3m	140mm	30W LED Module	Aluminium
SLSG1003	3.5m	165mm	30W LED Module	Aluminium

Landscape light solar series



Product details



Product advantages

- 1.OSRAM or Philips high luminous led chip are used in the whole lamp , the light efficiency of whole lamp could reach 180-260LM/W
- 2.Class A polysilicon solar panels is used in the whole lamp, conversion efficiency ≥18%, quickly converts light energy into electricity
- 3.Power lithium iron phosphate battery is used in the whole lamp , new cell, more cycles, longer life
- 4.The whole lamp is made of high-quality profile structural components, which are integrated oxidation molding, UV resistant, corrosion resistant, acid and alkali resistant
- 5.The whole lamp can achieve uninterrupted lighting throughout the night in 365 days, intelligent AI control system, reasonable distribution of battery power
- 6.The whole lamp can be continuously charged on rainy days, low light charging technology, normal charging on rainy days
- 7.Streamlined design housing, in line with public aesthetics, has a certain self-cleaning ability, improve heat dissipation efficiency

Applicable

Villas, communities, parks, plazas, roads

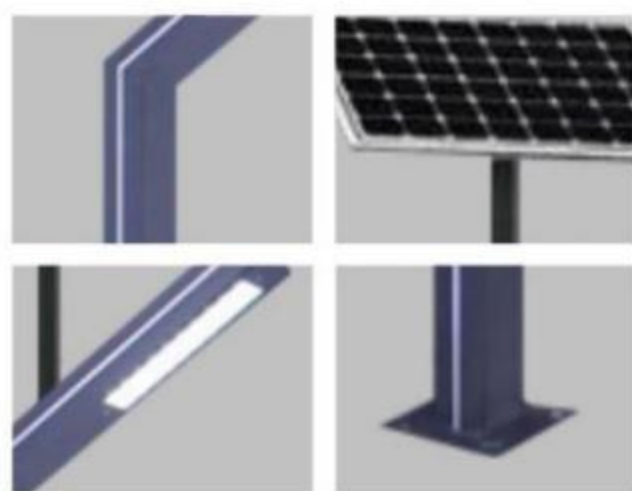
Basic parameters

Model	Height	Size	LED	Material
SLSG1004	3m	200*200mm	30W LED Module	Aluminium
SLSG1004	3.5m	200*200mm	30W LED Module	Aluminium

Landscape light solar series



Product details



Product advantages

1. OSRAM or Philips high luminous led chip are used in the whole lamp , the light efficiency of whole lamp could reach 180-260LM/W
2. Class A polysilicon solar panels is used in the whole lamp , conversion efficiency ≥18%, quickly converts light energy into electricity
3. Power lithium iron phosphate battery is used in the whole lamp , new cell, more cycles, longer life
4. The whole lamp is made of high-quality profile structural components, which are integrated oxidation molding, UV resistant, corrosion resistant, acid and alkali resistant
5. The whole lamp can achieve uninterrupted lighting throughout the night in 365 days, intelligent AI control system, reasonable distribution of battery power
6. The whole lamp can be continuously charged on rainy days, low light charging technology, normal charging on rainy days
7. Streamlined design housing, in line with public aesthetics, has a certain self-cleaning ability, improve heat dissipation efficiency

Applicable

Villas, communities, parks, plazas, roads

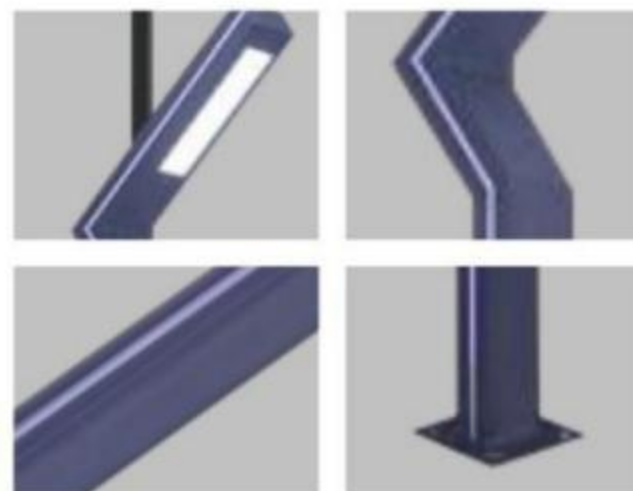
Basic parameters

Model	Height	Size	LED	Material
SLSG1005	3m	85*130mm	30W LED Module	Aluminium
SLSG1005	3.5m	85*130mm	30W LED Module	Aluminium

Landscape light solar series



Product details



Product advantages

1. OSRAM or Philips high luminous led chip are used in the whole lamp , the light efficiency of whole lamp could reach 180-260LM/W
2. Class A polysilicon solar panels is used in the whole lamp , conversion efficiency ≥18%, quickly converts light energy into electricity
3. Power lithium iron phosphate battery is used in the whole lamp , new cell, more cycles, longer life
4. The whole lamp is made of high-quality profile structural components, which are integrated oxidation molding, UV resistant, corrosion resistant, acid and alkali resistant
5. The whole lamp can achieve uninterrupted lighting throughout the night in 365 days, intelligent AI control system, reasonable distribution of battery power
6. The whole lamp can be continuously charged on rainy days, low light charging technology, normal charging on rainy days
7. Streamlined design housing, in line with public aesthetics, has a certain self-cleaning ability, improve heat dissipation efficiency

Applicable

Villas, communities, parks, plazas, roads

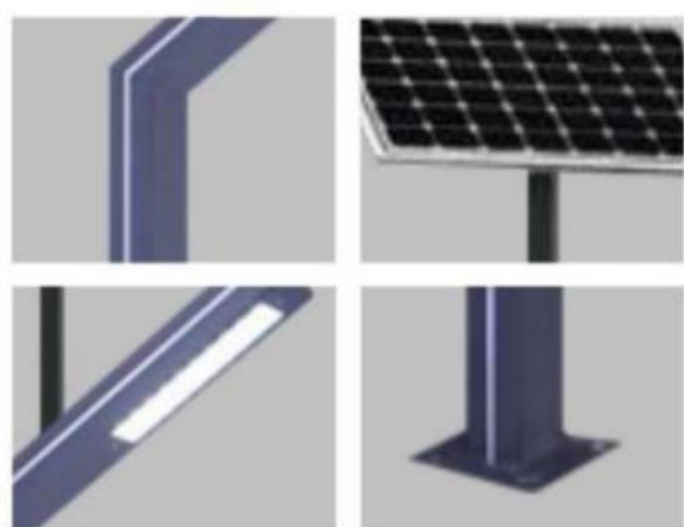
Basic parameters

Model	Height	Size	LED	Material
SLSG1006	3m	85*130mm	30W LED Module	Aluminium
SLSG1006	3.5m	85*130mm	30W LED Module	Aluminium

Landscape light solar series



Product details



Product advantages

1. OSRAM or Philips high luminous led chip are used in the whole lamp , the light efficiency of whole lamp could reach 180-260LM/W
2. Class A polysilicon solar panels is used in the whole lamp , conversion efficiency >18%, quickly converts light energy into electricity
3. Power lithium iron phosphate battery is used in the whole lamp , new cell , more cycles , longer life
4. The whole lamp is made of high-quality profile structural components , which are integrated oxidation molding , UV resistant , corrosion resistant , acid and alkali resistant
5. The whole lamp can achieve uninterrupted lighting throughout the night in 365 days , intelligent AI control system , reasonable distribution of battery power
6. The whole lamp can be continuously charged on rainy days , low light charging technology , normal charging on rainy days
7. Streamlined design housing , in line with public aesthetics , has a certain self-cleaning ability , improve heat dissipation efficiency

Applicable

Villas , communities , parks , plazas , roads

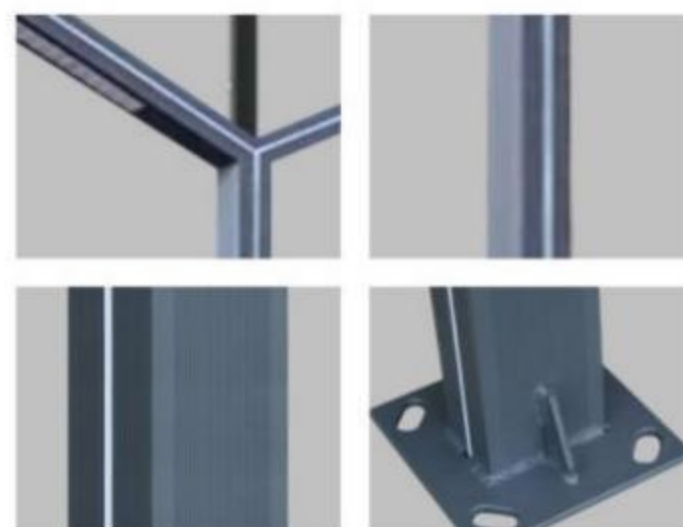
Basic parameters

Model	Height	Size	LED	Material
SLSG1007	3m	85*130mm	30W LED Module	Aluminium
SLSG1007	3.5m	85*130mm	30W LED Module	Aluminium

Landscape light solar series



Product details



Product advantages

1. OSRAM or Philips high luminous led chip are used in the whole lamp , the light efficiency of whole lamp could reach 180-260LM/W
2. Class A polysilicon solar panels is used in the whole lamp , conversion efficiency >18%, quickly converts light energy into electricity
3. Power lithium iron phosphate battery is used in the whole lamp , new cell , more cycles , longer life
4. The whole lamp is made of high-quality profile structural components , which are integrated oxidation molding , UV resistant , corrosion resistant , acid and alkali resistant
5. The whole lamp can achieve uninterrupted lighting throughout the night in 365 days , intelligent AI control system , reasonable distribution of battery power
6. The whole lamp can be continuously charged on rainy days , low light charging technology , normal charging on rainy days
7. Streamlined design housing , in line with public aesthetics , has a certain self-cleaning ability , improve heat dissipation efficiency

Applicable

Villas , communities , parks , plazas , roads

Basic parameters

Model	Height	Size	LED	Material
SLSG1008	3m	85*130mm	30W LED Module	Aluminium
SLSG1008	3.5m	85*130mm	30W LED Module	Aluminium